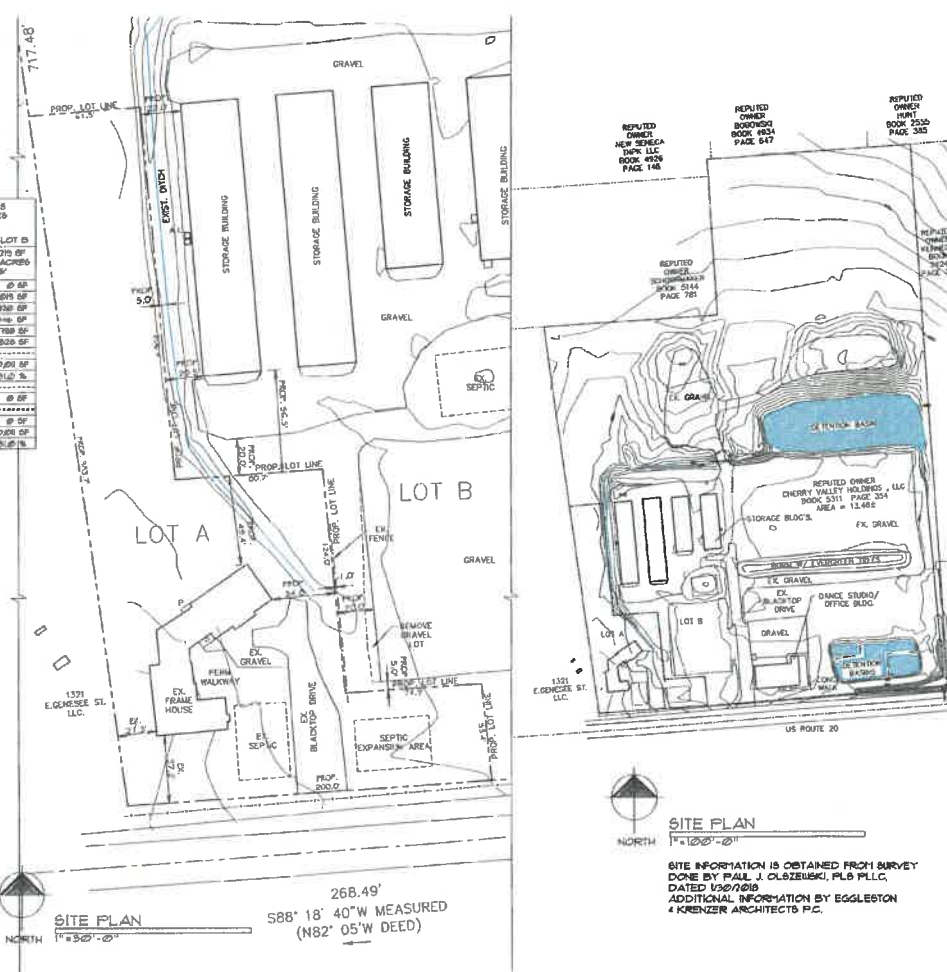


TOTAL LOT		0.5 ACRES	
NET BUILDABLE AREA		0.5 ACRES	
CONVENTIONAL SUBDIVISION			
	EXISTING	LOT A	LOT B
LOT AREA	546,626 SF	38,461 SF	546,375 SF
ROAD FRONTAGE	139 ACRES	9 ACRES	128 ACRES
ROAD FRONTAGE	644.5'	444.5'	444.5'
HOUSE PORCH/DECK	3,748 SF	3,748 SF	0 SF
BLACKTOP	3,355 SF	3,375 SF	7,650 SF
GRAVEL AREA	145,514 SF	765 SF	142,838 SF
STORAGE BLDG'S	8,948 SF	0 SF	8,948 SF
CONC. WALKS	788 SF	0 SF	788 SF
DANCE STUDIO	3,928 SF	0 SF	3,928 SF
TOTAL INC.	78,023 SF	3,815 SF	78,023 SF
% INC COVER	5.9%	0.3%	3.1%
WALKWAY	849 SF	849 SF	0 SF
TOTAL PEG	849 SF	849 SF	0 SF
TOTAL COV	78,872 SF	3,815 SF	78,872 SF
% TGC	5.9%	0.3%	3.1%



**SKETCH PLAN**  
 KUMALWARD SUBDIVISION  
 TOWN OF SHARONVILLE, NY

**architect**  
 EGGLESTON & KRENZER ARCHITECTS P.C.  
 1391 EAST GARAGE STREET  
 SHARONVILLE, NY 13152  
 (315) 655-0144

PROJ: 22075

DATE:  
 2 MAY 2022

**SITE PLAN**  
 1" = 125' - 0"

SITE INFORMATION IS OBTAINED FROM SURVEY  
 DONE BY PAUL J. OLSZEWSKI, PLB PLLC,  
 DATED 1/20/2019  
 ADDITIONAL INFORMATION BY EGGLESTON  
 & KRENZER ARCHITECTS P.C.