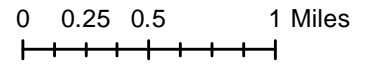
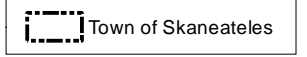
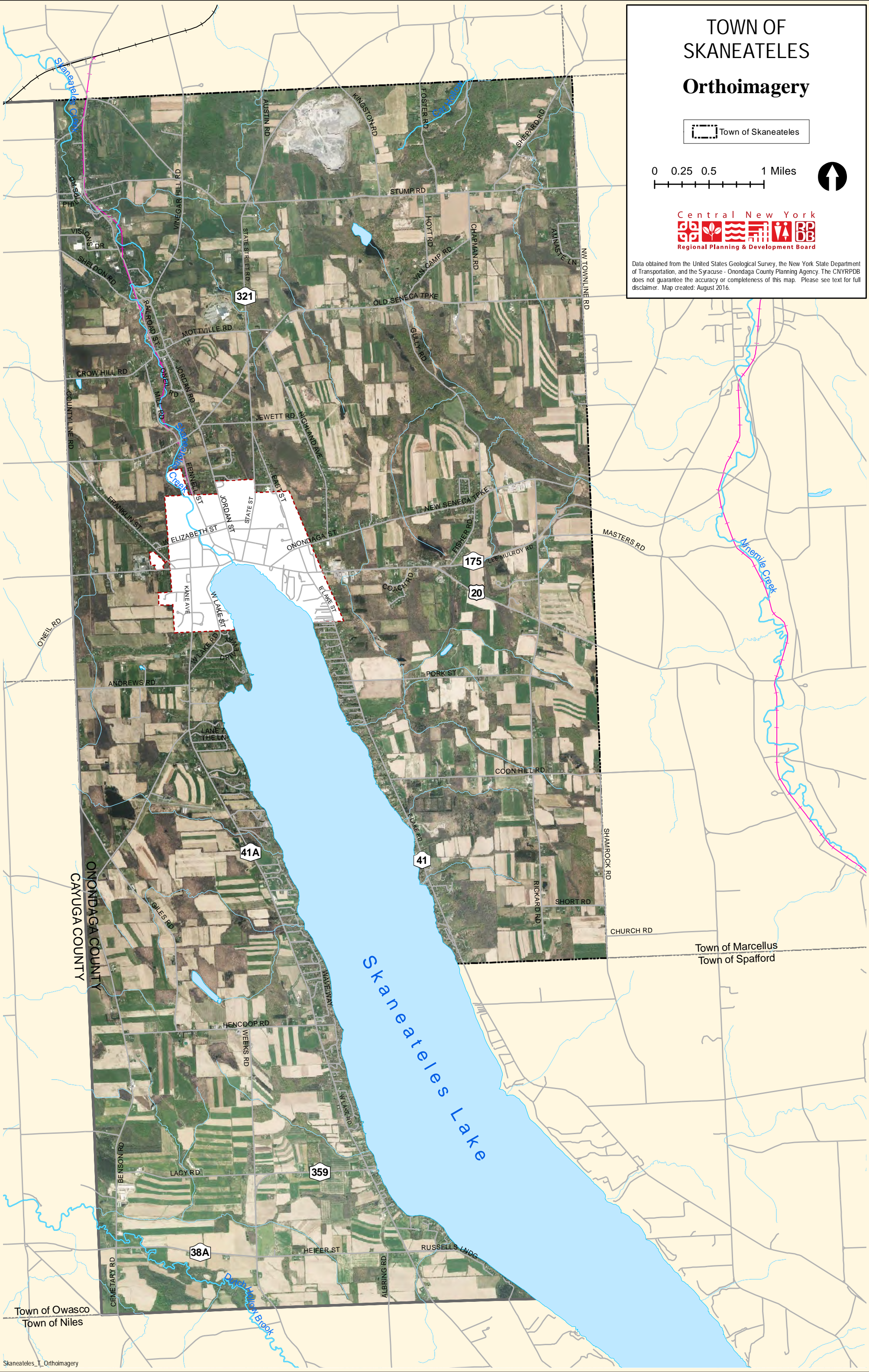


# TOWN OF SKANEATELES Orthoimagery

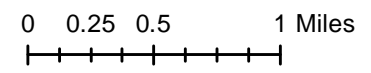


Data obtained from the United States Geological Survey, the New York State Department of Transportation, and the Syracuse - Onondaga County Planning Agency. The CNYRPDB does not guarantee the accuracy or completeness of this map. Please see text for full disclaimer. Map created: August 2016.

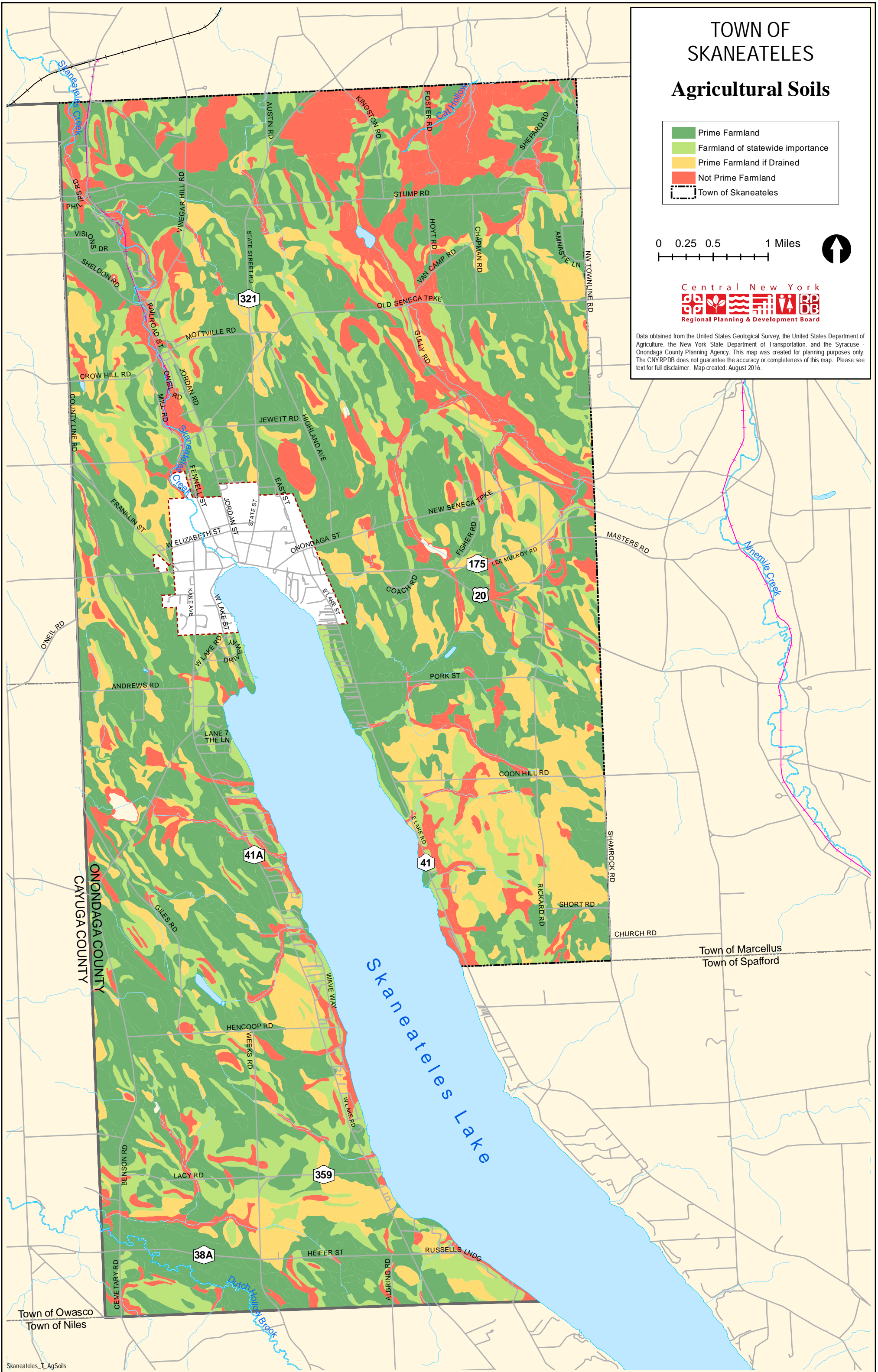


# TOWN OF SKANEATELES

## Agricultural Soils



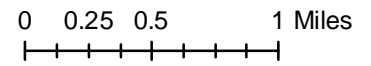
Data obtained from the United States Geological Survey, the United States Department of Agriculture, the New York State Department of Transportation, and the Syracuse - Onondaga County Planning Agency. This map was created for planning purposes only. The CNYRPDB does not guarantee the accuracy or completeness of this map. Please see text for full disclaimer. Map created: August 2016.



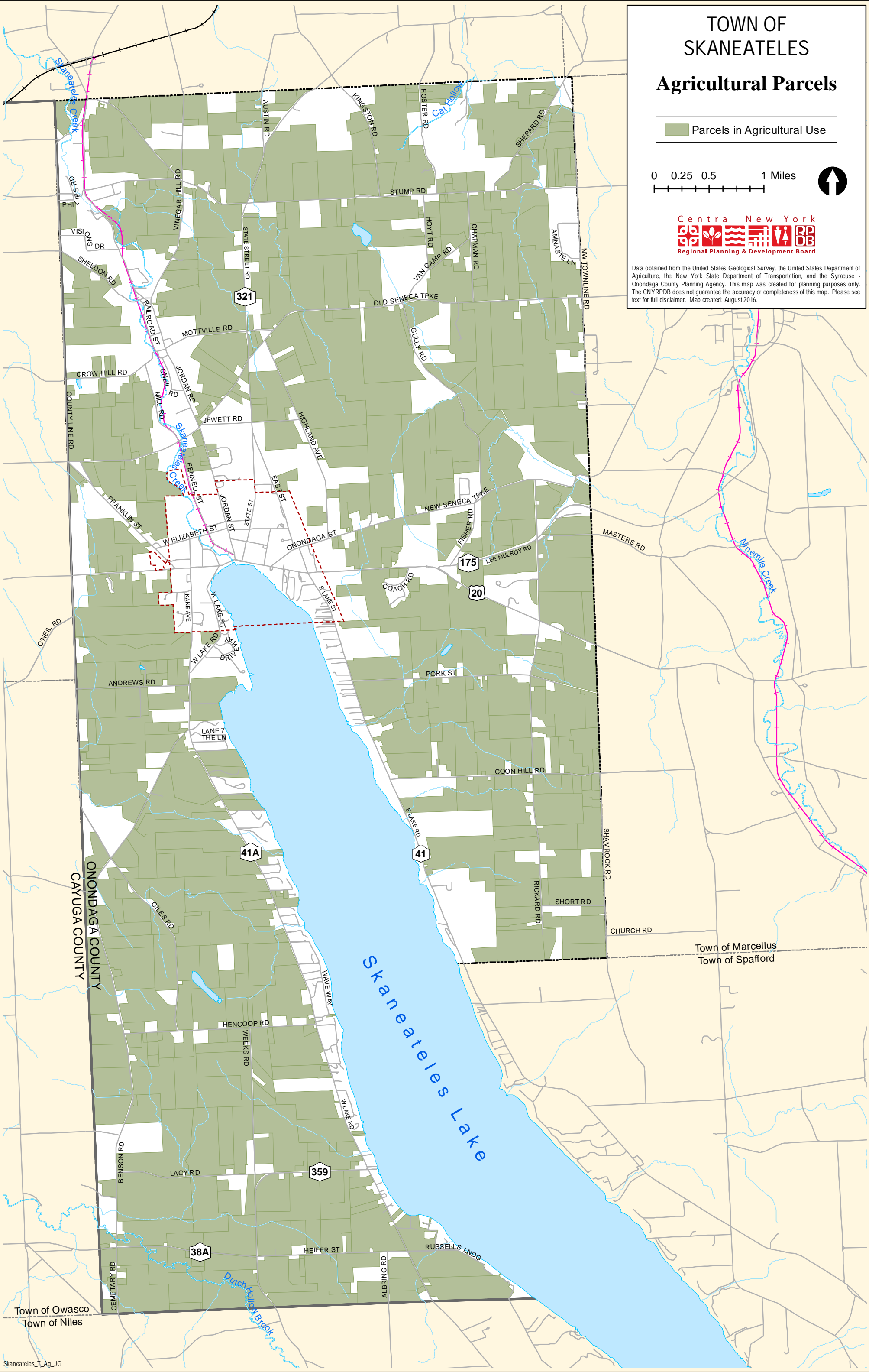
# TOWN OF SKANEATELES

## Agricultural Parcels



Parcels in Agricultural Use

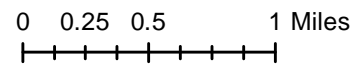


Data obtained from the United States Geological Survey, the United States Department of Agriculture, the New York State Department of Transportation, and the Syracuse - Onondaga County Planning Agency. This map was created for planning purposes only. The CNYRPDB does not guarantee the accuracy or completeness of this map. Please see text for full disclaimer. Map created: August 2016.

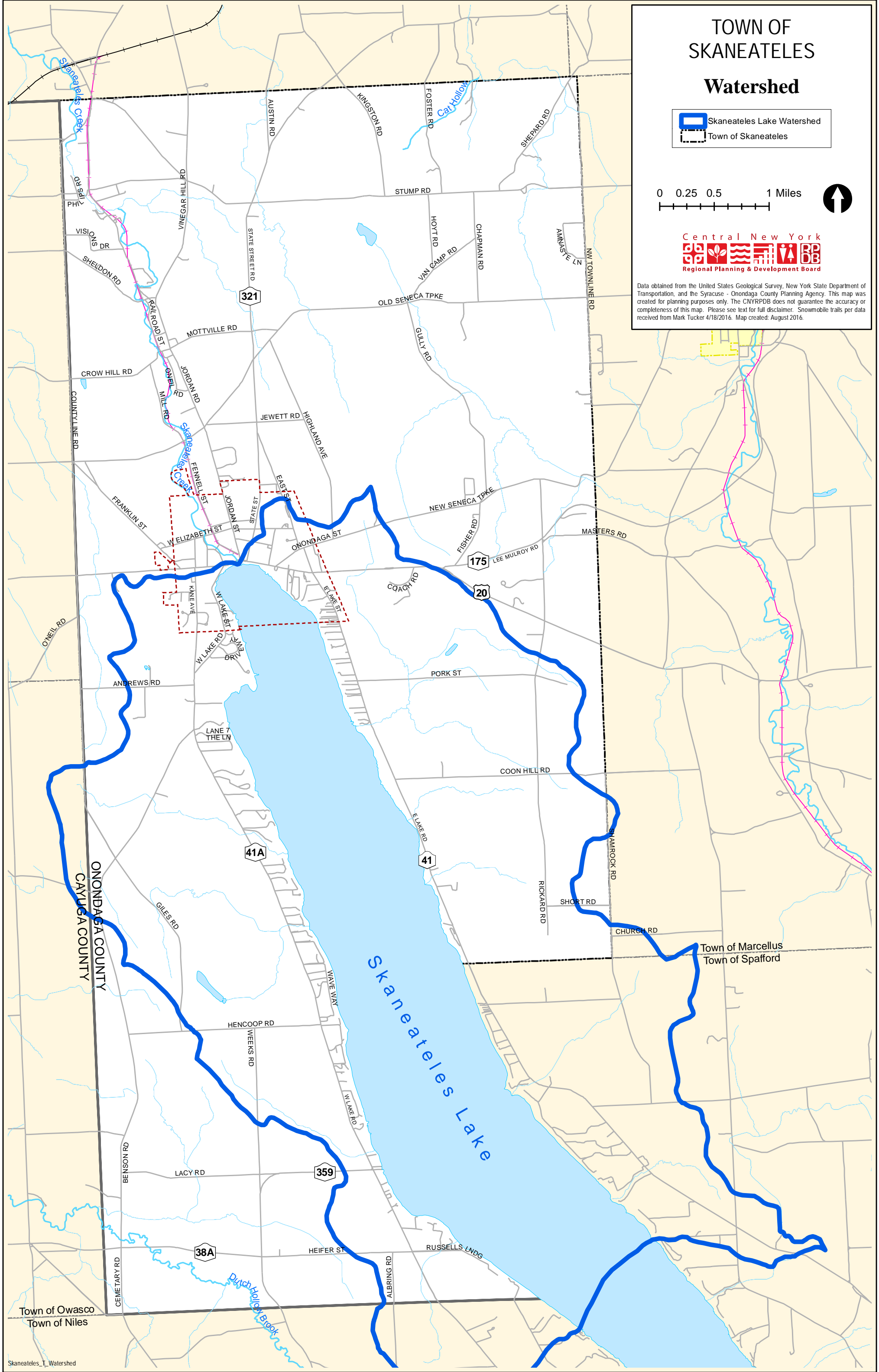


# TOWN OF SKANEATELES Watershed

 Skaneateles Lake Watershed  
 Town of Skaneateles

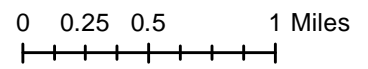
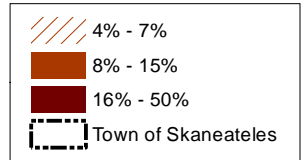


Data obtained from the United States Geological Survey, New York State Department of Transportation, and the Syracuse - Onondaga County Planning Agency. This map was created for planning purposes only. The CNYRPDB does not guarantee the accuracy or completeness of this map. Please see text for full disclaimer. Snowmobile trails per data received from Mark Tucker 4/18/2016. Map created: August 2016.

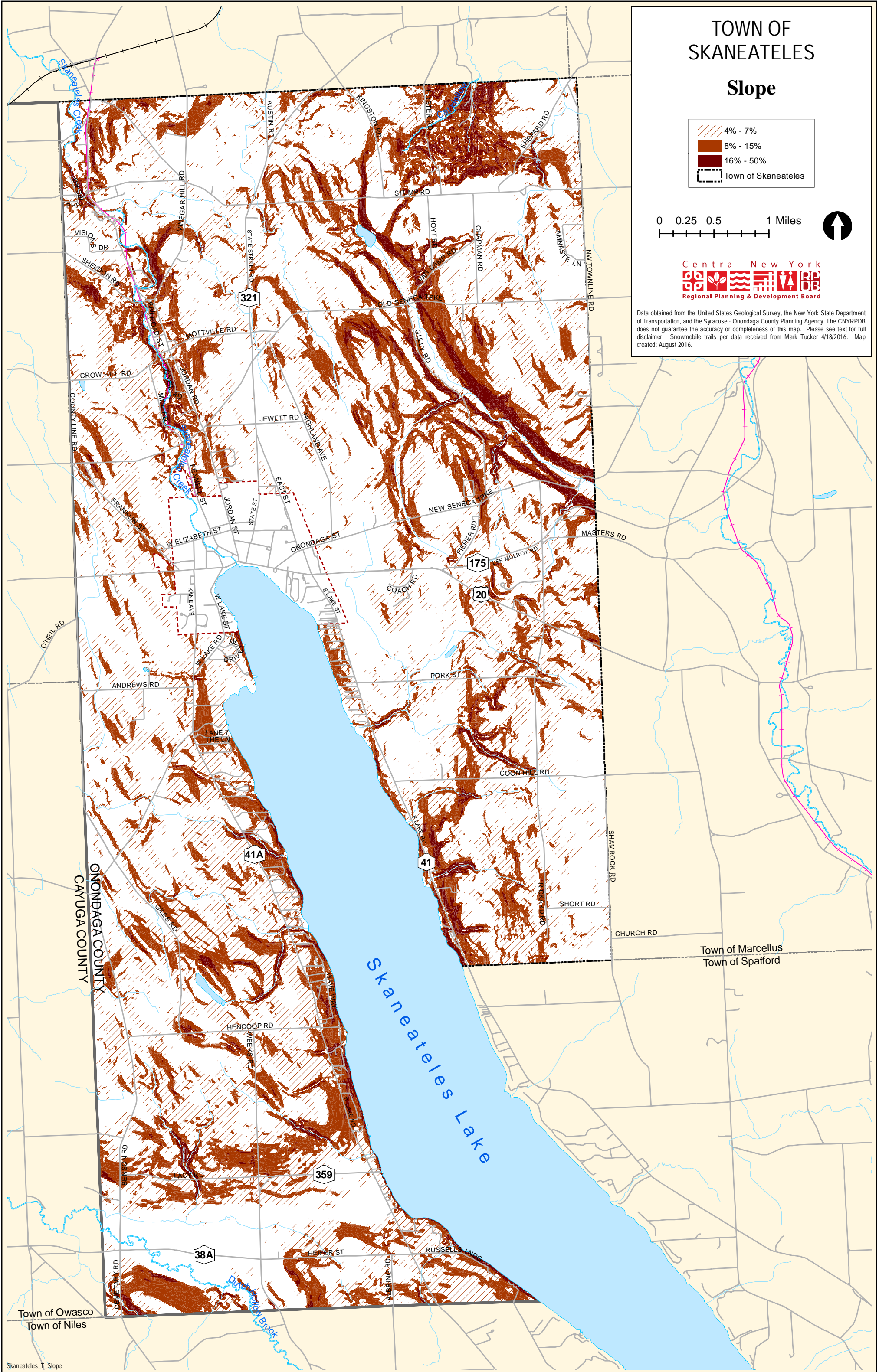


# TOWN OF SKANEATELES

## Slope

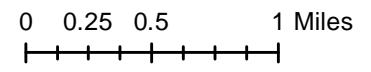
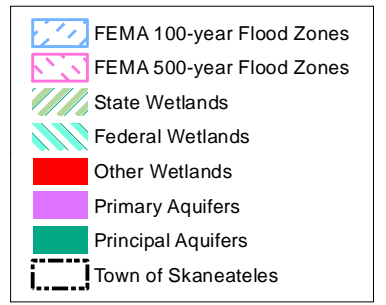


Data obtained from the United States Geological Survey, the New York State Department of Transportation, and the Syracuse - Onondaga County Planning Agency. The CNYRPDB does not guarantee the accuracy or completeness of this map. Please see text for full disclaimer. Snowmobile trails per data received from Mark Tucker 4/18/2016. Map created: August 2016.

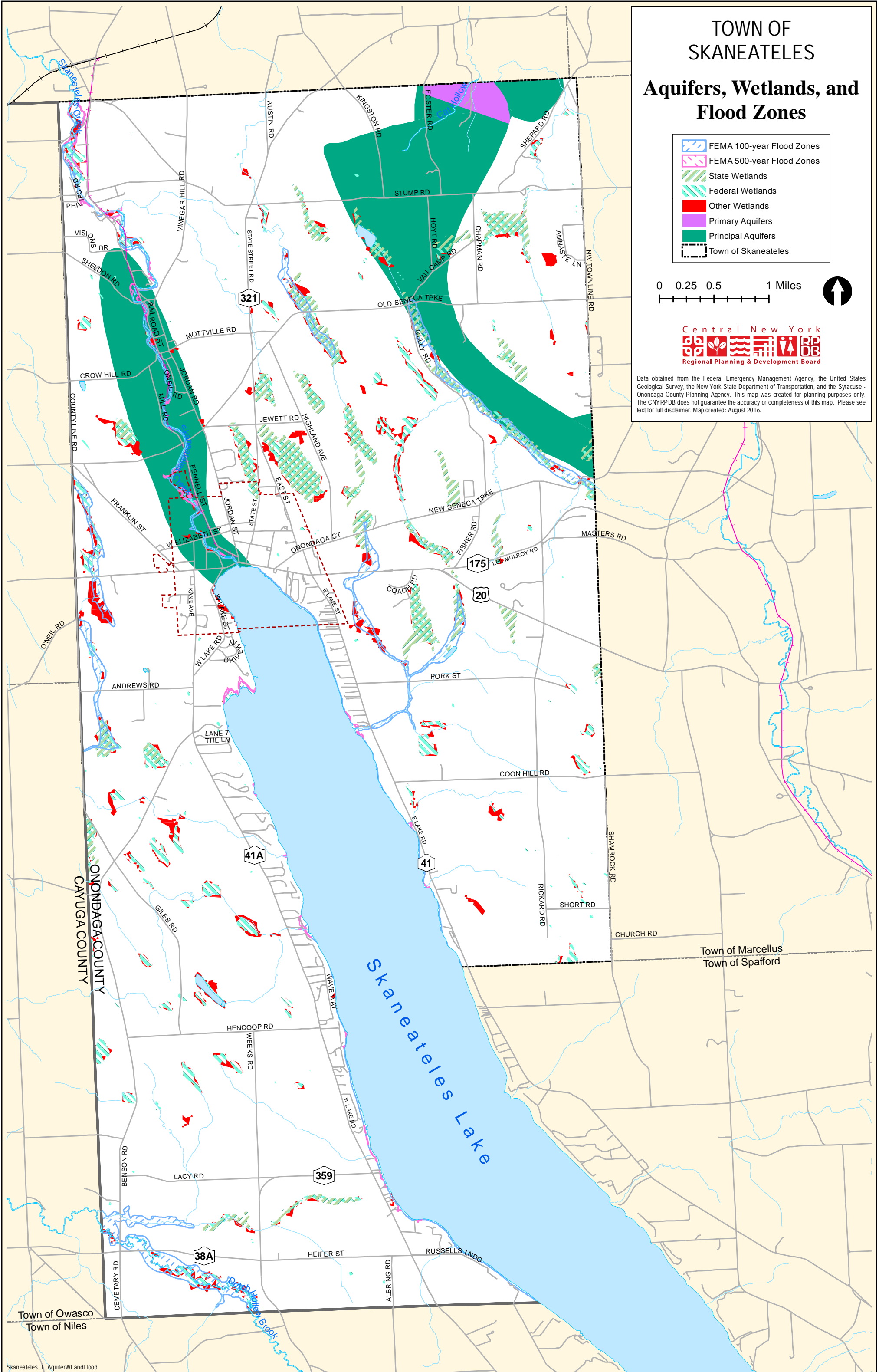


# TOWN OF SKANEATELES

## Aquifers, Wetlands, and Flood Zones



Data obtained from the Federal Emergency Management Agency, the United States Geological Survey, the New York State Department of Transportation, and the Syracuse - Onondaga County Planning Agency. This map was created for planning purposes only. The CNYRPDB does not guarantee the accuracy or completeness of this map. Please see text for full disclaimer. Map created: August 2016.

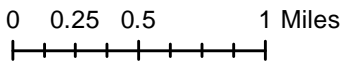


# TOWN OF SKANEATELES

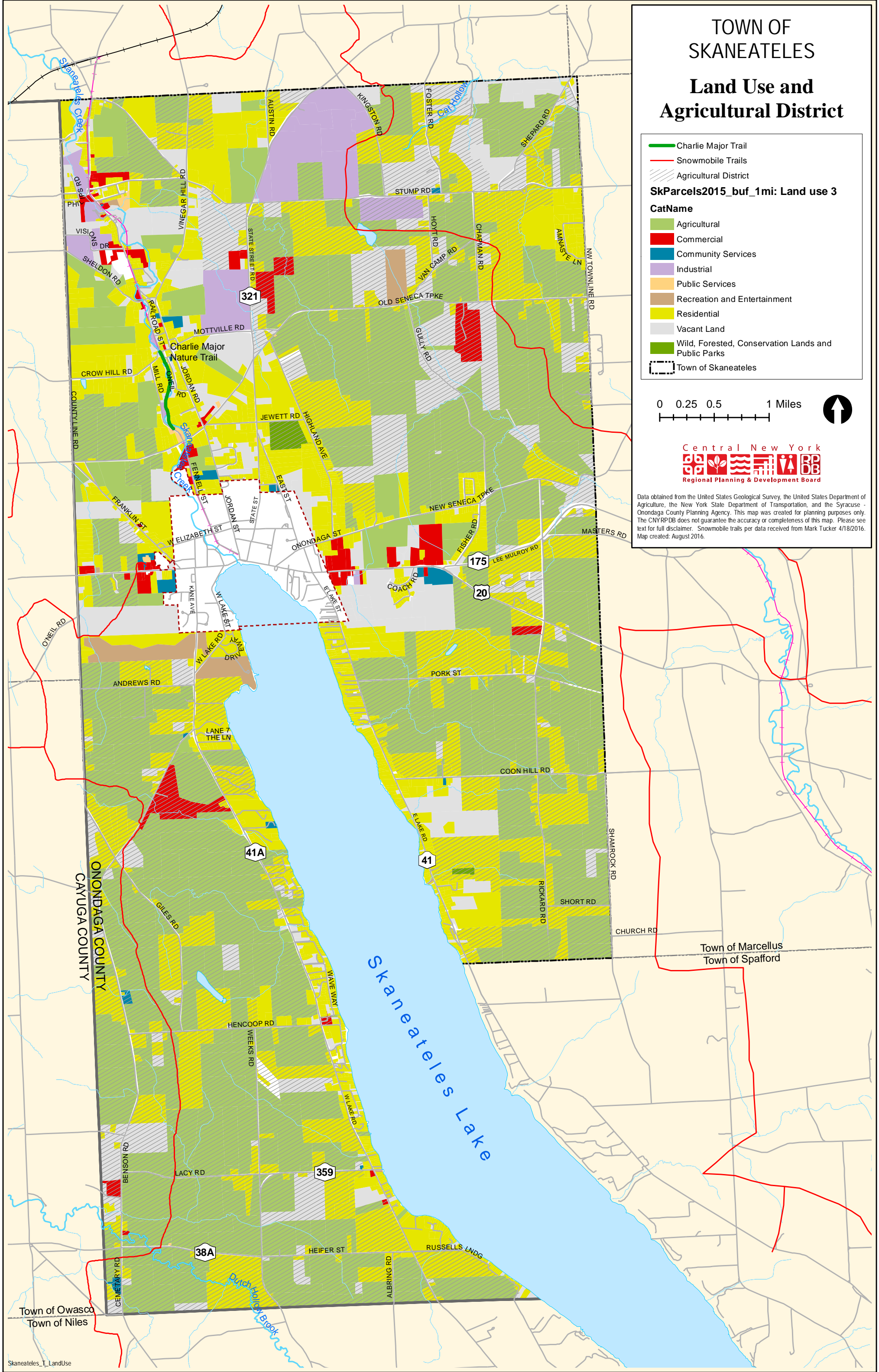
## Land Use and Agricultural District

-  Charlie Major Trail
-  Snowmobile Trails
-  Agricultural District
- SkParcels2015\_buf\_1mi: Land use 3**
- CatName**
-  Agricultural
-  Commercial
-  Community Services
-  Industrial
-  Public Services
-  Recreation and Entertainment
-  Residential
-  Vacant Land
-  Wild, Forested, Conservation Lands and Public Parks
-  Town of Skaneateles

0 0.25 0.5 1 Miles




Data obtained from the United States Geological Survey, the United States Department of Agriculture, the New York State Department of Transportation, and the Syracuse - Onondaga County Planning Agency. This map was created for planning purposes only. The CNYRPDB does not guarantee the accuracy or completeness of this map. Please see text for full disclaimer. Snowmobile trails per data received from Mark Tucker 4/18/2016. Map created: August 2016.



# TOWN OF SKANEATELES

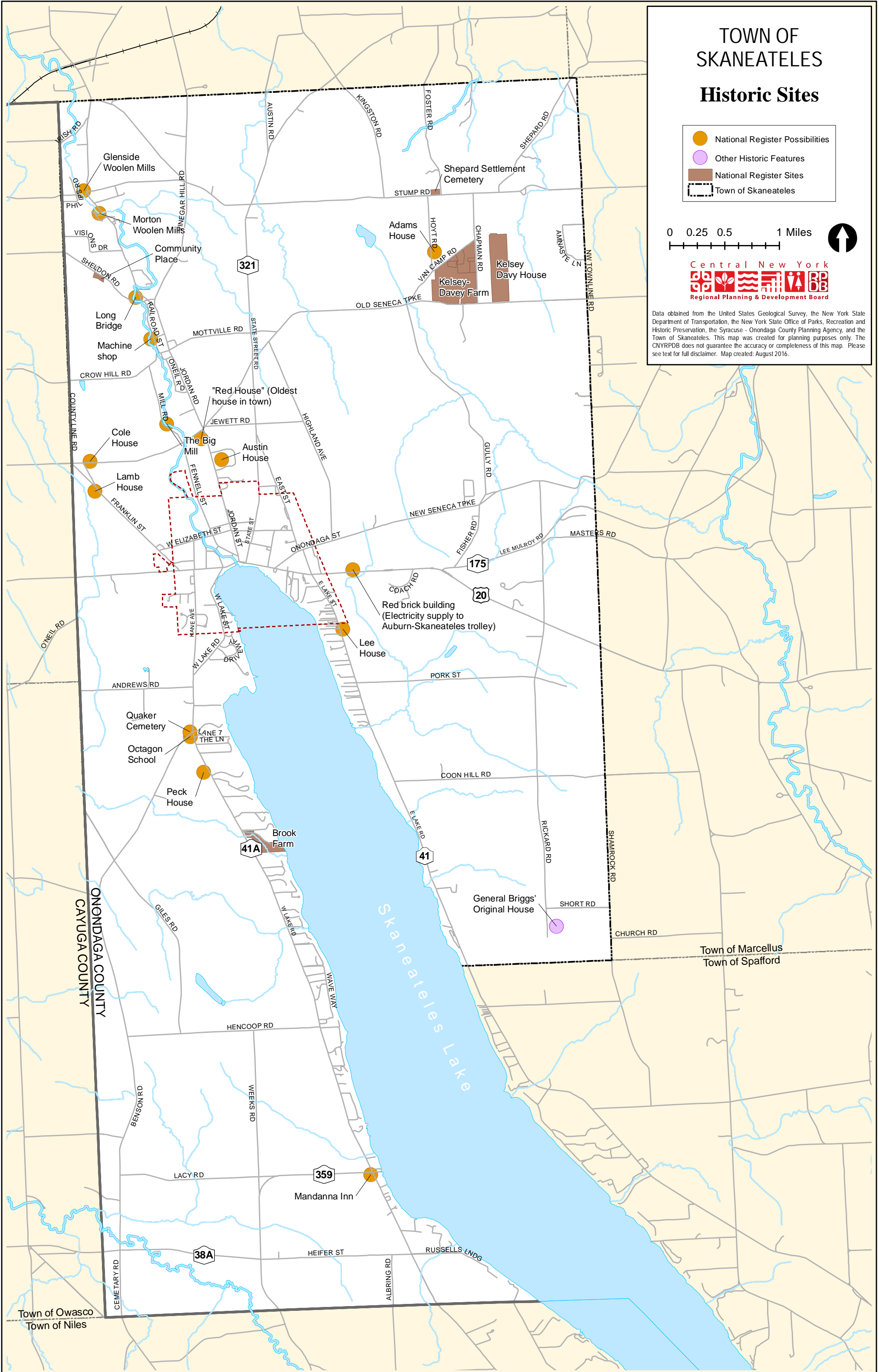
## Historic Sites

- National Register Possibilities
- Other Historic Features
- National Register Sites
- Town of Skaneateles

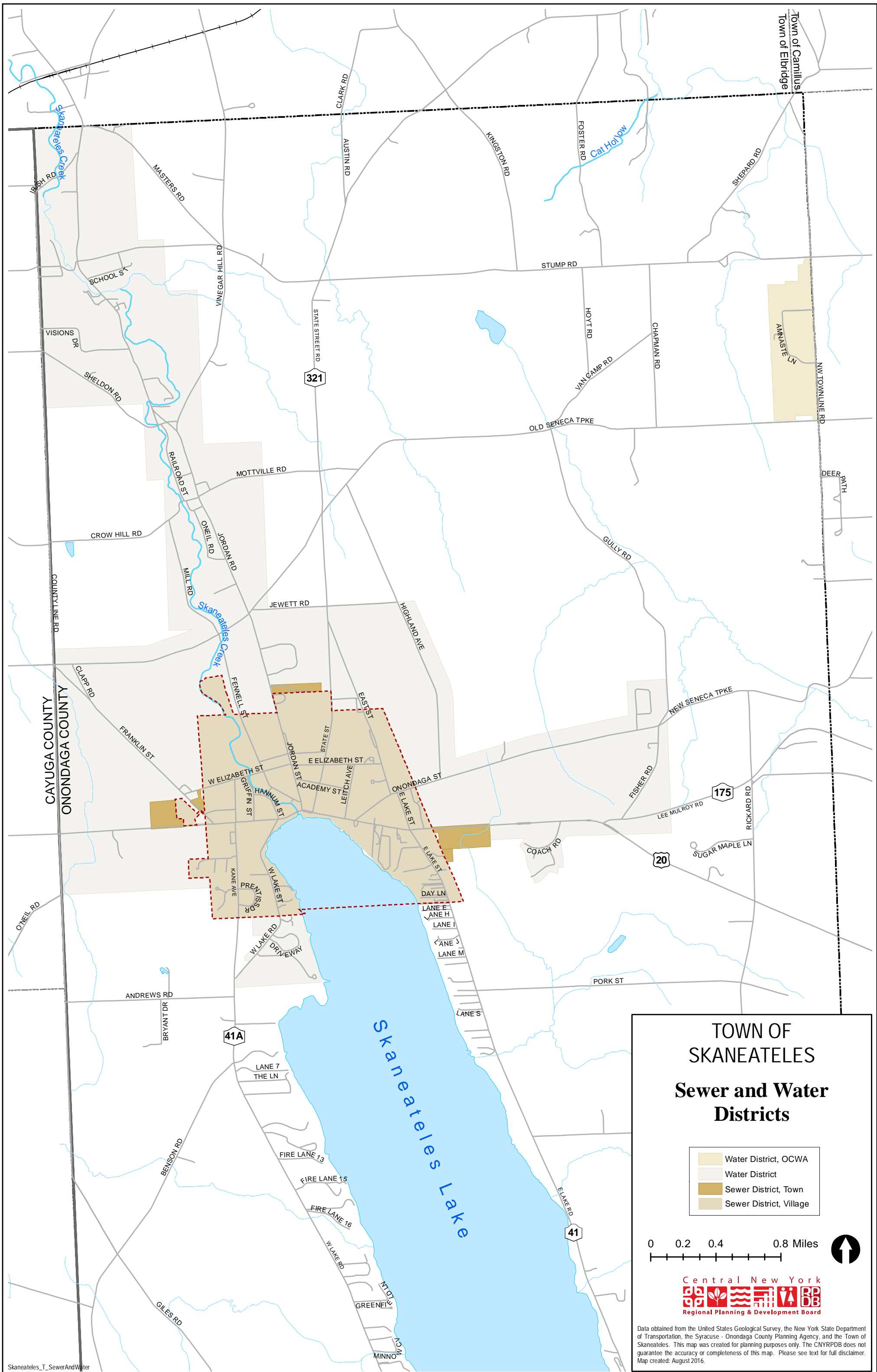
0 0.25 0.5 1 Miles



Data obtained from the United States Geological Survey, the New York State Department of Transportation, the New York State Office of Parks, Recreation and Historic Preservation, the Syracuse - Onondaga County Planning Agency, and the Town of Skaneateles. This map was created for planning purposes only. The CNYRPDB does not guarantee the accuracy or completeness of this map. Please see text for full disclaimer. Map created: August 2016.



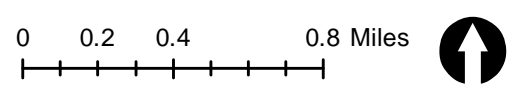




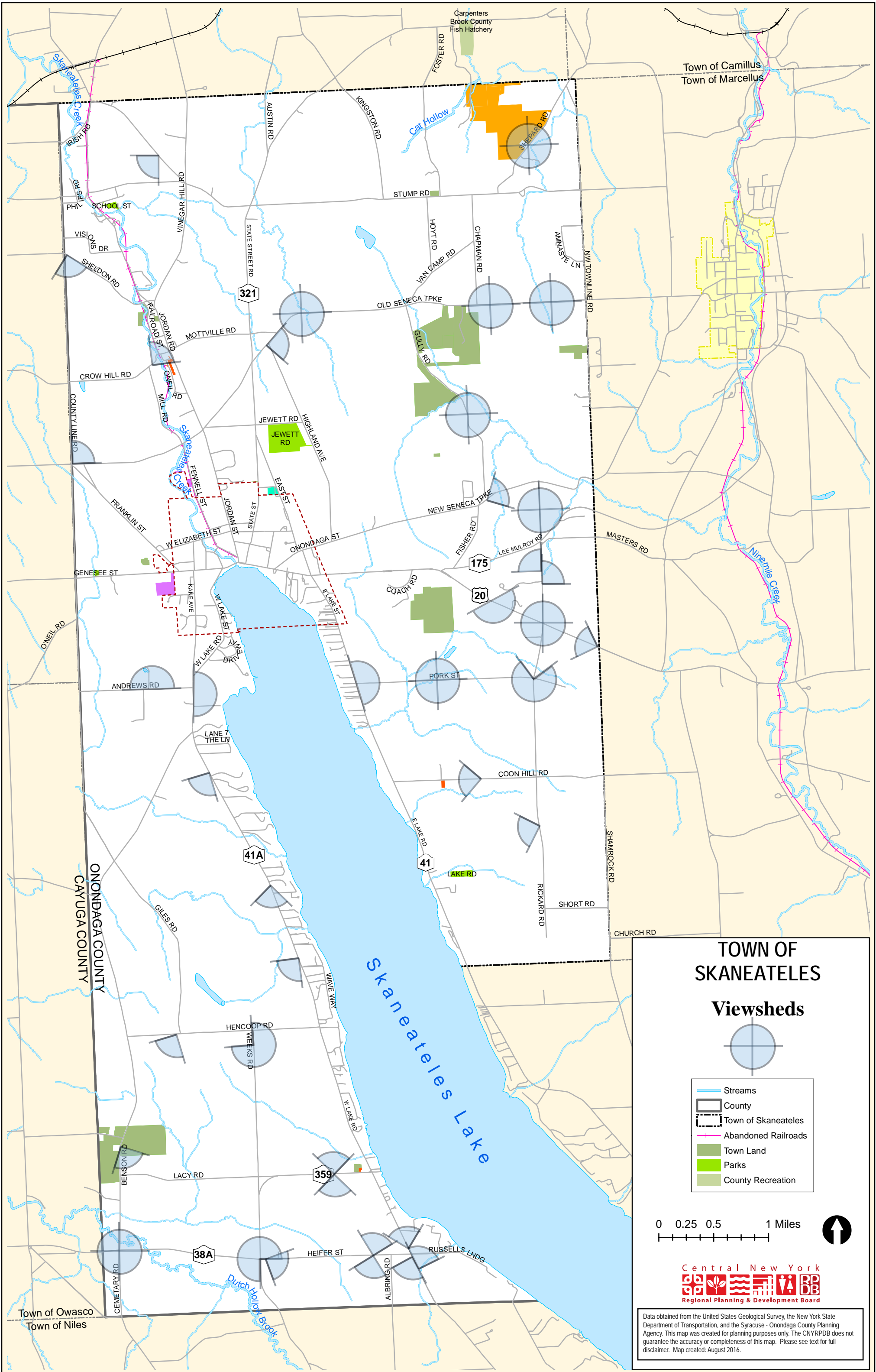
# TOWN OF SKANEATELES

## Sewer and Water Districts

- Water District, OCWA
- Water District
- Sewer District, Town
- Sewer District, Village






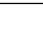
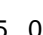


Data obtained from the United States Geological Survey, the New York State Department of Transportation, the Syracuse - Onondaga County Planning Agency, and the Town of Skaneateles. This map was created for planning purposes only. The CNRPDB does not guarantee the accuracy or completeness of this map. Please see text for full disclaimer. Map created: August 2016.

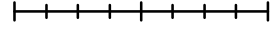


# TOWN OF SKANEATELES

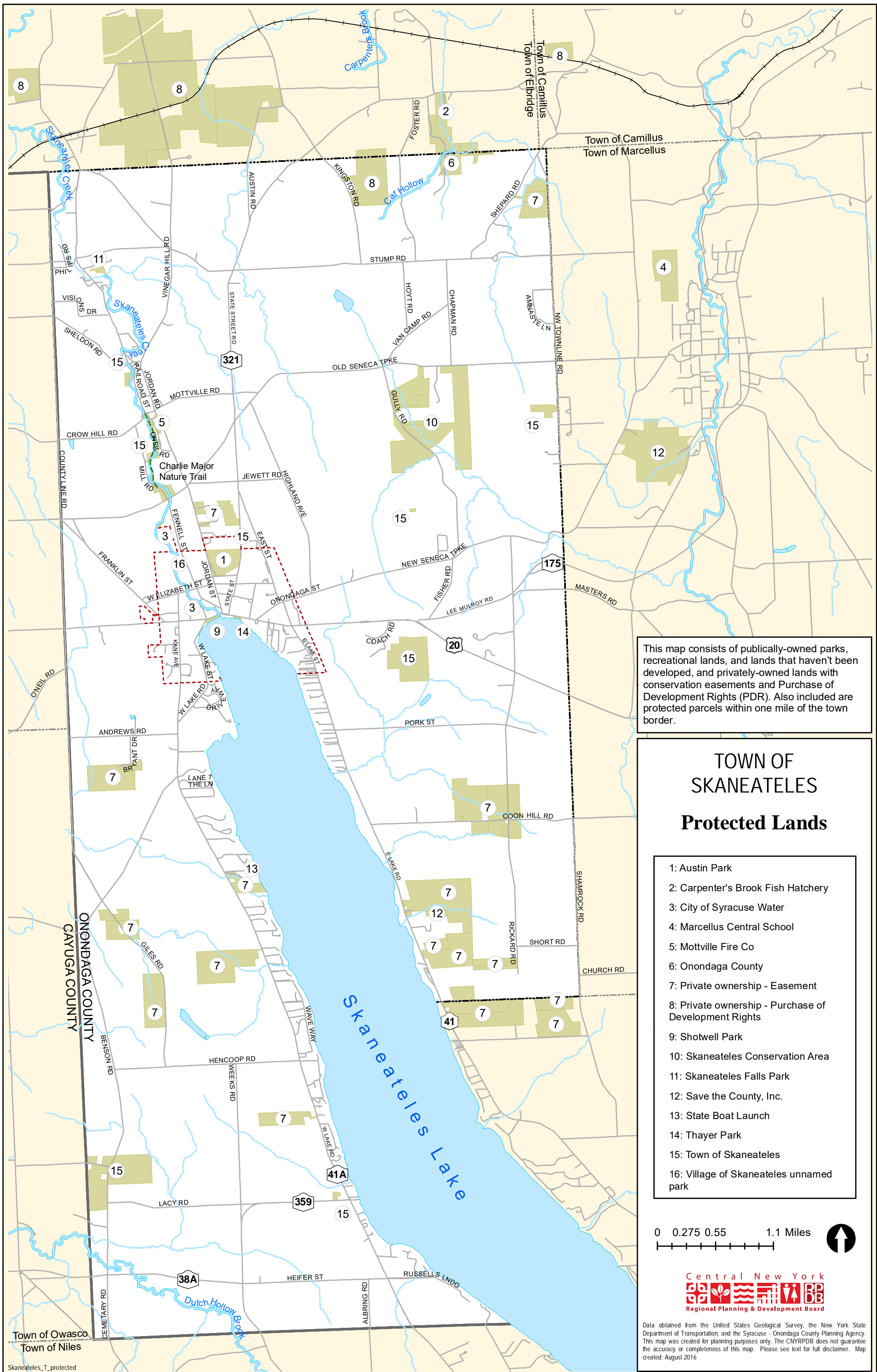
## Viewsheds

-  Streams
-  County
-  Town of Skaneateles
-  Abandoned Railroads
-  Town Land
-  Parks
-  County Recreation

0 0.25 0.5 1 Miles




Data obtained from the United States Geological Survey, the New York State Department of Transportation, and the Syracuse - Onondaga County Planning Agency. This map was created for planning purposes only. The CNYRPDB does not guarantee the accuracy or completeness of this map. Please see text for full disclaimer. Map created: August 2016.



This map consists of publically-owned parks, recreational lands, and lands that haven't been developed, and privately-owned lands with conservation easements and Purchase of Development Rights (PDR). Also included are protected parcels within one mile of the town border.

## TOWN OF SKANEATELES Protected Lands

- 1: Austin Park
- 2: Carpenter's Brook Fish Hatchery
- 3: City of Syracuse Water
- 4: Marcellus Central School
- 5: Mottville Fire Co
- 6: Onondaga County
- 7: Private ownership - Easement
- 8: Private ownership - Purchase of Development Rights
- 9: Shotwell Park
- 10: Skaneateles Conservation Area
- 11: Skaneateles Falls Park
- 12: Save the County, Inc.
- 13: State Boat Launch
- 14: Thayer Park
- 15: Town of Skaneateles
- 16: Village of Skaneateles unnamed park

0 0.275 0.55 1.1 Miles

Central New York  
Regional Planning & Development Board

Data obtained from the United States Geological Survey, the New York State Department of Transportation, and the Syracuse - Onondaga County Planning Agency. This map was created for planning purposes only. The CNYRPDB does not guarantee the accuracy or completeness of this map. Please see text for full disclaimer. Map created: August 2016

# TOWN OF SKANEATELES

## Suitability Analysis For Open Space Conservation

General Prioritization Based on Conservation Criteria

- Lower Priority
- Moderate Priority
- Higher Priority
- Protected Lands
- Brownfield & Remediation Sites

0 0.25 0.5 1 Miles



Data obtained from the United States Geological Survey, the New York State Department of Transportation, and the Syracuse - Onondaga County Planning Agency. This map was created for planning purposes only. The CNYRPDB does not guarantee the accuracy or completeness of this map. Please see text for full disclaimer. Map created: September 2016.

